

Disclaimer

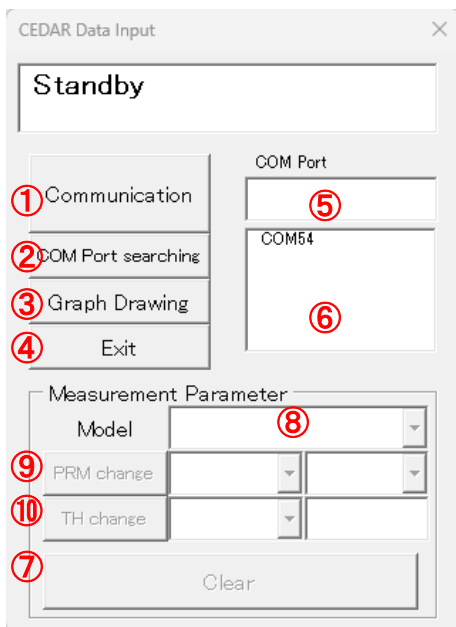
Regarding the use of this software, SUGISAKI METER CO.,LTD does not warrant about any troubles, losses and damages any-and-all.

Unzip the software

Please unzip the software downloaded from our homepage to any location and use it.

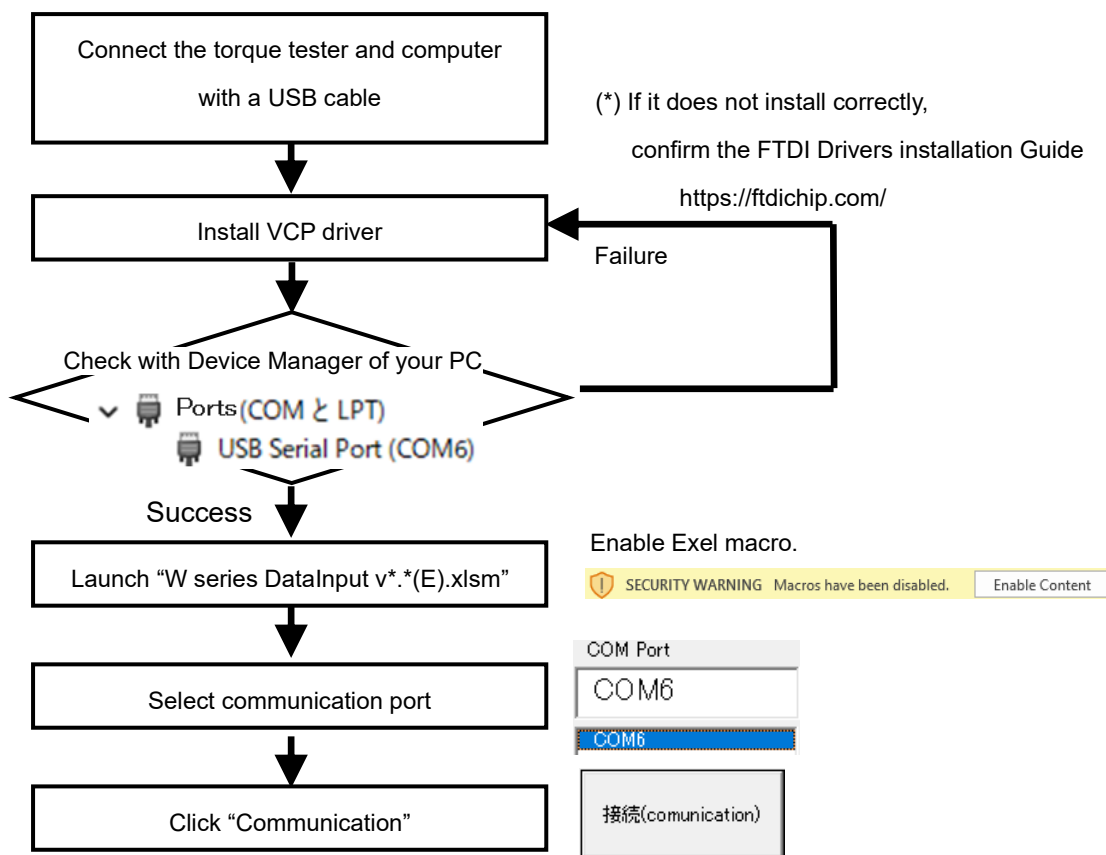
- W-Series DataInput v2.3.1 (E)
- |- W-Series DataInput v2.3.1(E).xism
- |- Graphs Folder to save created a graph.

Names and uses of MainForm



No	Contents
①	Communicate with the tester.
②	Search available communication ports.
③	Draw a graph using the received data.
④	Exit this software.
⑤	Select the communication port from ⑥.
⑥	Display a list of available communication ports.
⑦	Send a “CLEAR command” to the tester. Please check the tester's instruction manual for details.
⑧	Select the connected tester series.
⑨	Change the measurement parameter.
⑩	Change the judgement threshold.

Flow of communication

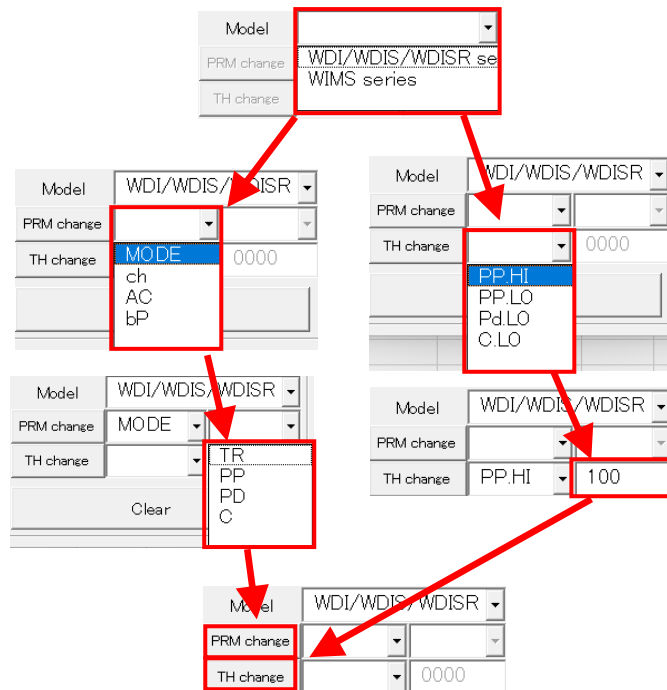
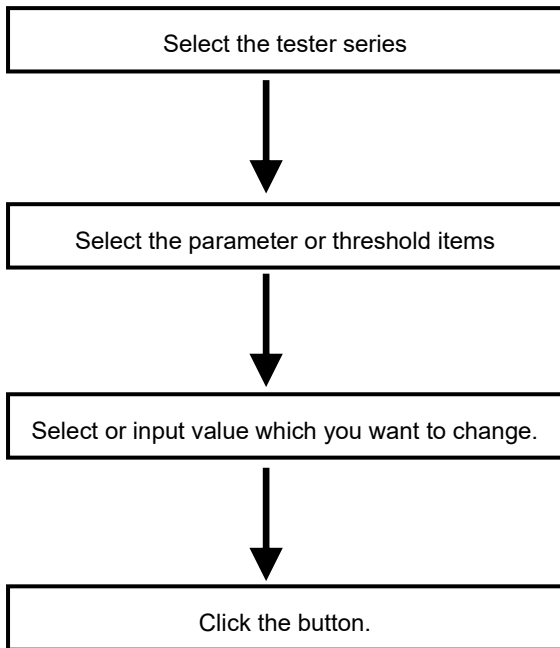


Receive measurement data

Measurement mode		Measurement data reception										
Peak hold mode Peak down mode	PP PD	Receive measurement data when clearing it. <table border="1"> <thead> <tr> <th>B</th> <th>C</th> </tr> </thead> <tbody> <tr> <td>1.43</td> <td>N*m</td> </tr> </tbody> </table>	B	C	1.43	N*m						
B	C											
1.43	N*m											
Realtime output mode	C	When detecting torque greater than the threshold (C.LO), receive measurement data <table border="1"> <thead> <tr> <th>B</th> <th>C</th> </tr> </thead> <tbody> <tr> <td>0.52</td> <td></td> </tr> <tr> <td>0.56</td> <td></td> </tr> <tr> <td>0.59</td> <td></td> </tr> <tr> <td>0.63</td> <td></td> </tr> </tbody> </table>	B	C	0.52		0.56		0.59		0.63	
B	C											
0.52												
0.56												
0.59												
0.63												

(*) The reception format of measurement data varies depending on the model. For details. Please check the instruction manual of the tester.

Measurement parameter setting



(*) For the threshold value, enter the 4-digit number you want to set, excluding the decimal point.

Graph drawing

